

Introduction to MAPP

Mobilizing for Action through Planning and Partnerships



Objectives



- Understand purpose and benefits of the MAPP process
- Be familiar with the concepts on which MAPP is based
- Recognize the phases and assessments of MAPP
- Be able to locate MAPP tools, resources, including Florida CHARTS



MAPP is:

- **A community-wide strategic planning tool** for improving public health.
- **A method to help communities prioritize** public health issues, identify resources for addressing them, and take action.

MAPP Overview



Three Keys to MAPP



- Strategic Thinking
- Community Driven Process
- Focus on the Local Public Health System



Strategic Thinking

- Requires broad-scale information gathering
- Encourages exploration of alternatives
- Places emphasis on future implications of present decisions
- Facilitates communication and participation
- Accommodates divergent interests and values





Community Driven Process

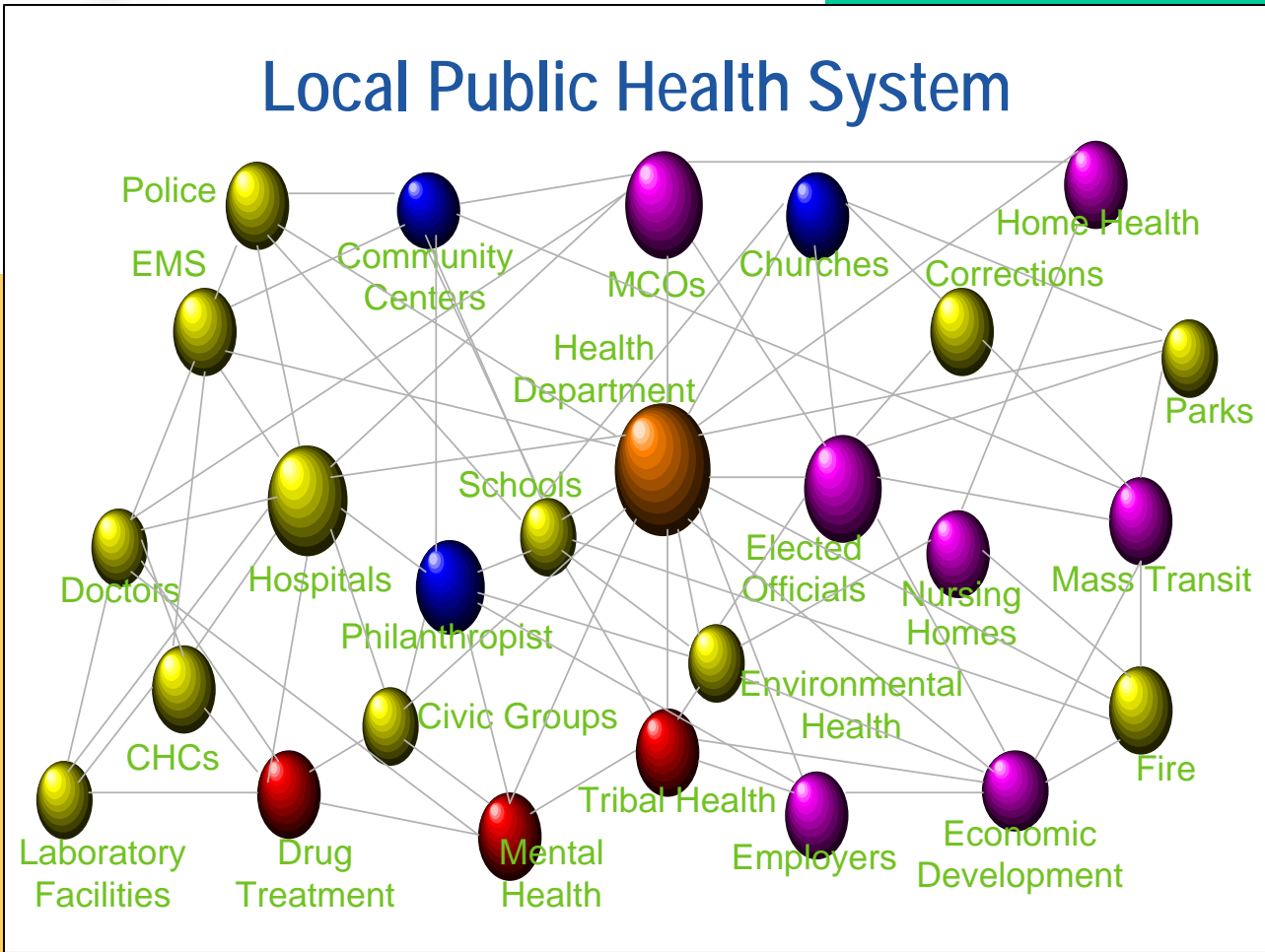
- Mobilizing and engaging the community
- Action with and by the community
- Planning driven by the community
- Partnerships to strengthen the community





Local Public Health System

Local Public Health System



Paradigm Shift



- MAPP is a journey, not a destination
- MAPP is a shift in how we think about public health activities and planning with and through our communities
- MAPP is a complete, long-term system-wide paradigm shift

The MAPP Paradigm Shift

FROM	TO
Operational planning	Strategic Planning
Focus on the agency	Focus on community & entire public health system
Needs assessment	Emphasis on assets and resources
Medically oriented model	Broad definition of health
Agency knows all	Everyone knows something

MAPP Overview



Six phases

- **Organize for Success and Partnership Development**
- **Visioning**
- **Four MAPP Assessments**
 - Community Themes and Strengths
 - “What is important to our community?”
 - Local Public Health System
 - “How are the Essential Services being provided?”

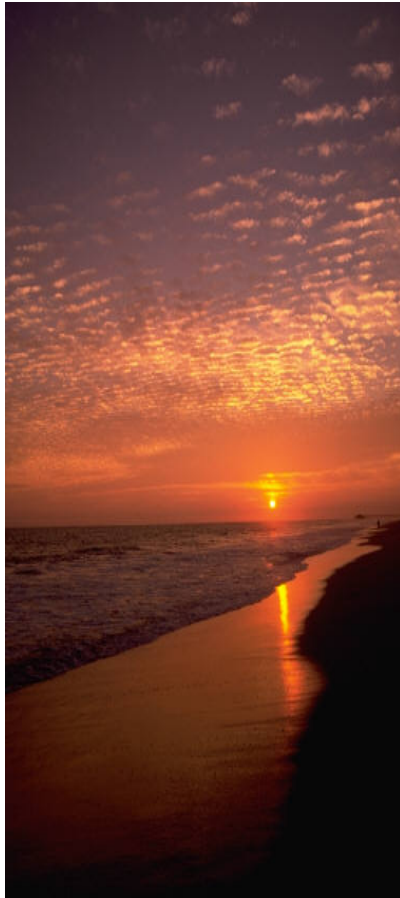
MAPP Overview (cont.)



- Community Health Status
 - “How healthy is are our residents?”
- Forces of Change
 - What is occurring or might occur that affects the health of our community or LPHS?”

- **Identify Strategic Issues**
- **Formulate Goals and Strategies**
- **Action Cycle**
 - Plan
 - Implement
 - Evaluate

Is MAPP the the Right Tool?



- **APEXPH**: Internal LHD and Community Health Assessments
- **PACE EH**: Environmental Health Assessment
- **PATCH**: Community Health Assessment
- **MAPP**: A community health improvement process with a broad definition of health

Benefits of MAPP



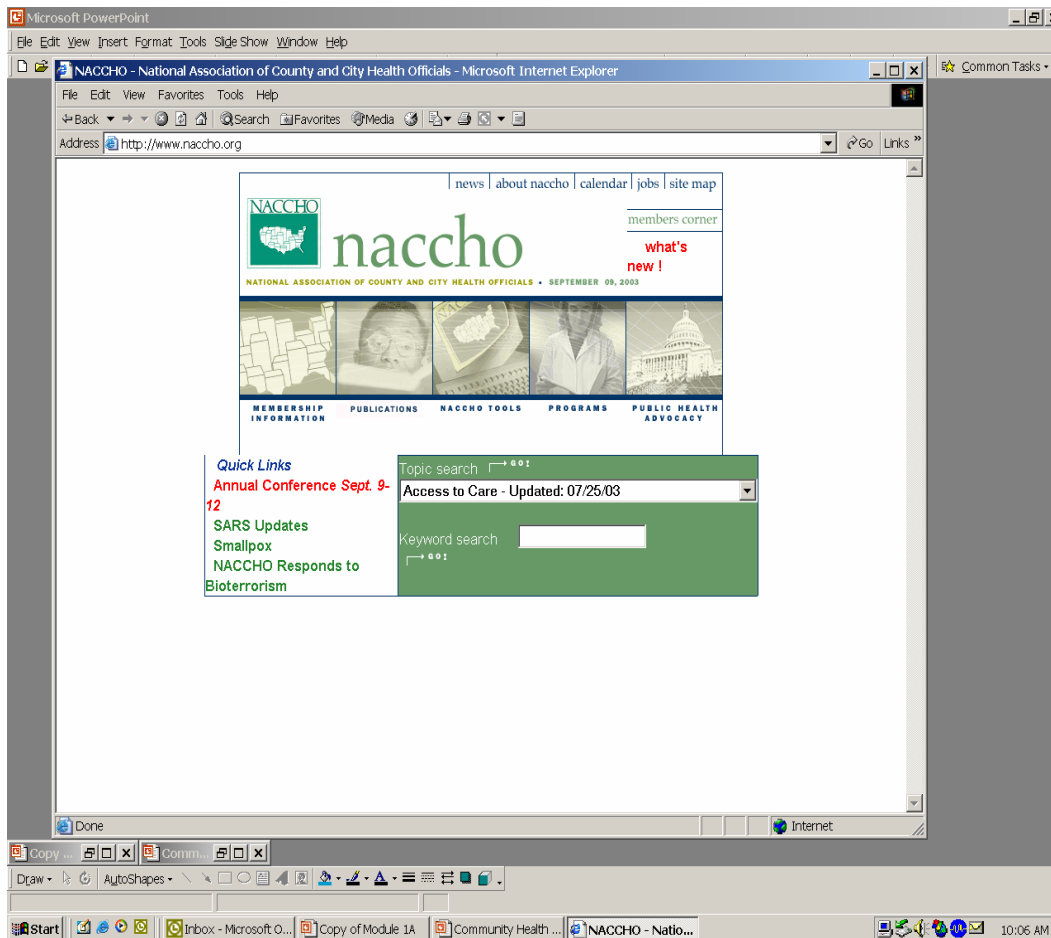
- **Creates a healthy community** and better quality of life
- **Increases visibility of public health**
- Anticipates and **manages change**
- Creates a **stronger public health infrastructure**
- Builds **stronger** partnerships
- **Builds public health leadership**
- **Creates advocates** for public health

MAPP Connects with National Frameworks and Initiatives



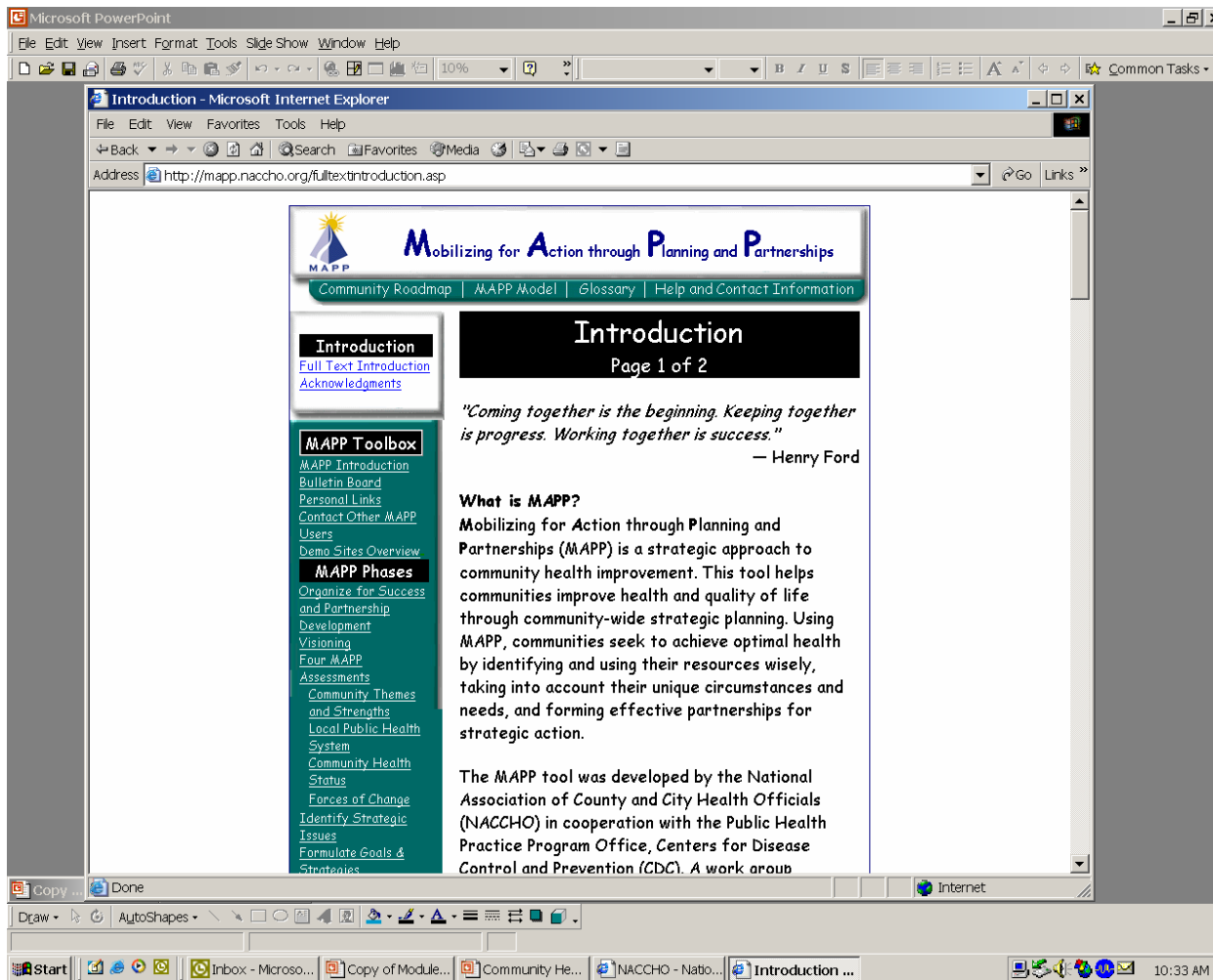
- **NPHPSP** is used within MAPP to assess the local public health system
- MAPP can help address **Healthy People 2010** objectives
- **Essential Services** framework ensures a comprehensive picture of public health
- MAPP is a potential activity in **Focus Area A, CDC BT grant program**

MAPP Tools



- Available on NACCHO's website at www.naccho.org
- Access is free
- MAPP Field Guide

MAPP Website



- Register by entering e-mail address
- Tools and resources can be downloaded and printed

Florida CHARTS

- Community Health Assessment Resource Tool Set
- Web-based data system provides the infrastructure for community partners to implement community health improvement planning processes
- Follows the MAPP process
- Provides access to >800 health indicators



Florida CHARTS

Community Health Assessment Resource Tool Set (CHARTS) - Microsoft Internet Explorer

Address: http://hpe00ws/charts/chart.aspx

FLORIDA CHARTS

Community Health Assessment Resource Tool Set

Community Reports

- County Health Profile Report

Indicator Reports

- Communicable Diseases
- Chronic Diseases
- Maternal & Child Health
- Environmental Health
- Injuries
- Social & Mental Health
- Health Resources Availability
- Socio-Demographics

Comparison Reports

- County Death Data Comparison
- County Birth Data Comparison
- County Health Status Comparison
- Other Comparison Reports

Other Links

- Florida Behavioral Risk Factor Data
- Feedback
- Statistical Guide
- Home

Welcome to the Florida **Community Health Assessment Resource Tool Set (CHARTS)**. You can use this tool to help identify health problems in your community. Use CHARTS to navigate your way to better health!

What you see here is CHARTS Phase I, but we're not finished! [Click here for CHARTS features](#) to be released by the end of the year. Additionally, we plan to release CHARTS to the Internet later in the fall.

Recent Updates

Recently Added Items

New Data

- [2002 Nursing Home Bed data](#)
- [2002 WIC and Child Nutrition](#)
- [2002 Chronic Disease hospitalizations](#)
- [2001 Sexually Transmitted Diseases \(STD\)](#)
- [County-State Goal Achievement Report](#) updated with 2001 data

What's new in CHARTS

Improved reports allow you to view data in 3 and 10-year groups. In addition, the CHART system now includes the following new data: behavioral risk factors, hospitalizations, health resource availability, socio-demographics, crime, domestic violence and alcohol-related motor vehicle crash data.

New maps display data by county and allow you to view data for each individual county with ease.

New 20-year trend graphs allow you to compare

- Available on DOH intranet
- Features maps, trend lines, county health profiles
- Coming soon
 - Sub-county and zip code data
 - More graphs
 - Release to internet Fall '03

Need More Information on MAPP?

- Visit NACCHO's website for MAPP tools, resources
- Visit the Florida CHARTS intranet site <http://hpe00ws/charts/chart.aspx>
- Contact DOH Office of Planning, Evaluation and Data Analysis
 - Community Health Improvement Planning Initiative
 - Christine Abarca at 850-245-4444 ext 2071, e-mail: Christine_Abarca@doh.state.fl.us
 - Debbie Reich at 850-245-4444 ext. 2036, e-mail: Debbie_Reich@doh.state.fl.us